

GEND-INF--009

GEND-INF-009

DE82 008184

**PRE-DECONTAMINATION GAMMA-RAY  
SURFACE SCANS IN TMI-2 CONTAINMENT  
BUILDING 305' ELEVATION**

**E. D. Barefoot  
D. S. Cameron  
J. S. Cline  
J. A. Daniel  
D. G. Keefer  
E. A. Schlomer  
C. D. Thomas, Jr.**

**Science Applications, Inc.  
Nuclear Environmental Services  
Rockville, Maryland**

**February 1982**

**DISCLAIMER**

This book was prepared as an account of work sponsored by an agency of the United States Government. Neither the United States Government nor any agency thereof, nor any of their employees, makes any warranty, express or implied, or assumes any legal liability or responsibility for the accuracy, completeness, or usefulness of any information, apparatus, product, or process disclosed, or represents that its use would not infringe privately owned rights. Reference herein to any specific commercial product, process, or service by trade name, trademark, manufacturer, or otherwise, does not necessarily constitute or imply its endorsement, recommendation, or favoring by the United States Government or any agency thereof. The views and opinions of authors expressed herein do not necessarily state or reflect those of the United States Government or any agency thereof.

**Published on Behalf of the GEND Group  
by  
EG&G Idaho, Inc.  
Idaho Falls, Idaho 83415**

**Prepared for the  
U.S. Department of Energy  
Three Mile Island Operations Office  
Under DOE Contract No. DE-AC07-76ID01570**

**DISTRIBUTION OF THIS DOCUMENT IS UNLIMITED**

**TABLE OF CONTENTS**

	<u>Page</u>
<b>SUMMARY.....</b>	<b>1-1</b>
<b>MEASUREMENT TECHNIQUES AND DETECTOR CALIBRATION.....</b>	<b>2-1</b>
<b>MEASUREMENTS AND RESULTS.....</b>	<b>3-1</b>
<b>REFERENCES.....</b>	<b>R-1</b>

**TABLES**

<u>Table</u>		<u>Page</u>
1	Gamma-Ray Energies and Source Intensities For Detector Calibration Standard.....	2-4
2	On-Axis and Off-Axis Distances at Which Calibration Measurements Were Made.....	2-5
3	Description of Surface Areas Scanned in the Entry of December 16, 1981.....	3-3
4	Net <sup>137</sup> Cs Counting Rates and Surface Contamination Levels For the Five Scans.....	3-4

ILLUSTRATIONS

<u>Figure</u>		<u>Page</u>
1	Isometric Sketch of Detector Collimator Assembly.....	2-2
2	Sketch of Collimator Shielding.....	2-3
3	Gamma-Ray Detection Efficiency Curves For Floor Scans.....	2-7

## Section 1

### SUMMARY

On December 16, 1981 entry was made into the TMI-2 containment building to perform gamma-ray scans on surfaces of the 305' level. Five areas were selected for these measurements: two of them were of surfaces of walls, two were of floor surfaces under the reactor core flood tanks, and the remaining was of a floor surface in an area that had been receiving a great deal of personnel traffic. The results showed contamination levels of less than  $1 \mu\text{Ci}/\text{cm}^2$  for all of the surfaces, considerably less than was observed at the locations of previous scans. Two of the areas showed no net activity and minimum detectable limits are listed that are less than  $0.3 \mu\text{Ci}/\text{cm}^2$ .

## Section 2

### MEASUREMENT TECHNIQUES AND DETECTOR CALIBRATION

The SAI collimated gamma-ray spectrometer ("gamma-ray camera") that was used in the measurements was designed specifically for scanning reactor piping and components to determine quantitatively the activity concentrations in these items. It is used with a method of analysis and calibration that was also developed (1,2) by SAI for use with sources of abnormal or extended geometry. This or similar collimators have been used (3-12) in previous scans of reactor system components.

A sketch of the collimated detector assembly is shown in Figure 1. Removable stepped plugs can be inserted into the open end of the collimator. Plugs used in the present measurements consist of one having a 1-cm diameter hole and a solid plug used for "background measurements". Figure 2 shows a cross-sectional view of the shielding. The assembly can be rotated to point at any angle from 0° to 180° with respect to a perpendicular to the floor. The frame is mounted on eight-inch wheels for easy movement. An 8% efficient (relative to 3"x3" NaI(Tl)) hyperpure germanium detector was used in the assembly. The nitrogen retention time of the detector dewar is about eight hours. The detector preamplifier is a portion of the detector assembly. The detector bias supply, amplifier, and system low-voltage power supply are mounted on the collimator cart. Multichannel analyzer (MCA) and input-output devices (printer and magnetic tape unit) are placed separately from the cart; and as much as 500 feet of signal cable can connect the MCA with the amplifier.

Calibration of the detector-collimator system used the techniques discussed in References 1 and 2. A certified mixed-isotope point-source standard was used to measure both on-axis and off-axis detector response. Energies and intensities of the gamma-rays emitted by this standard are listed in Table 1. Measurements were made at several distances along the symmetry axis of the detector and at several distances off axis at a fixed distance along the detector. The values of these distances are given in Table 2.

Figure 1

ISOMETRIC SKETCH OF DETECTOR COLLIMATOR ASSEMBLY  
Not shown in the sketch are the 8" diameter wheels.

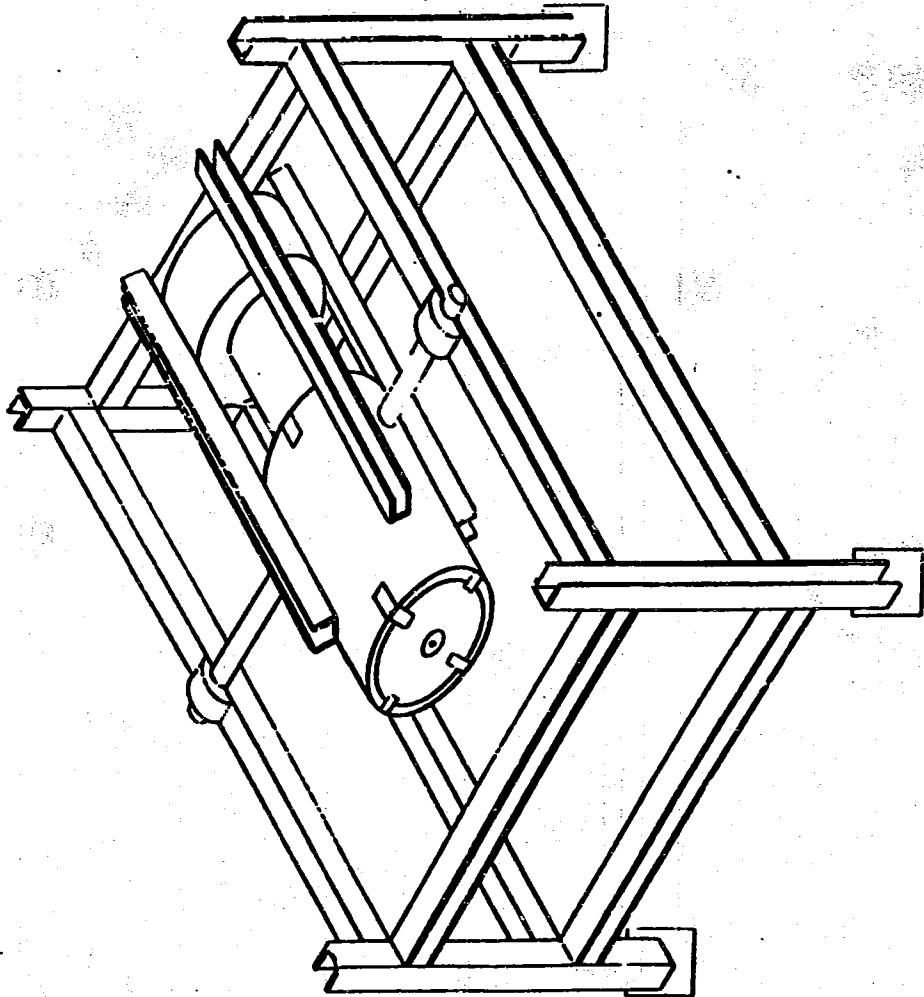


Figure 2  
SKETCH OF COLLIMATOR SHIELDING

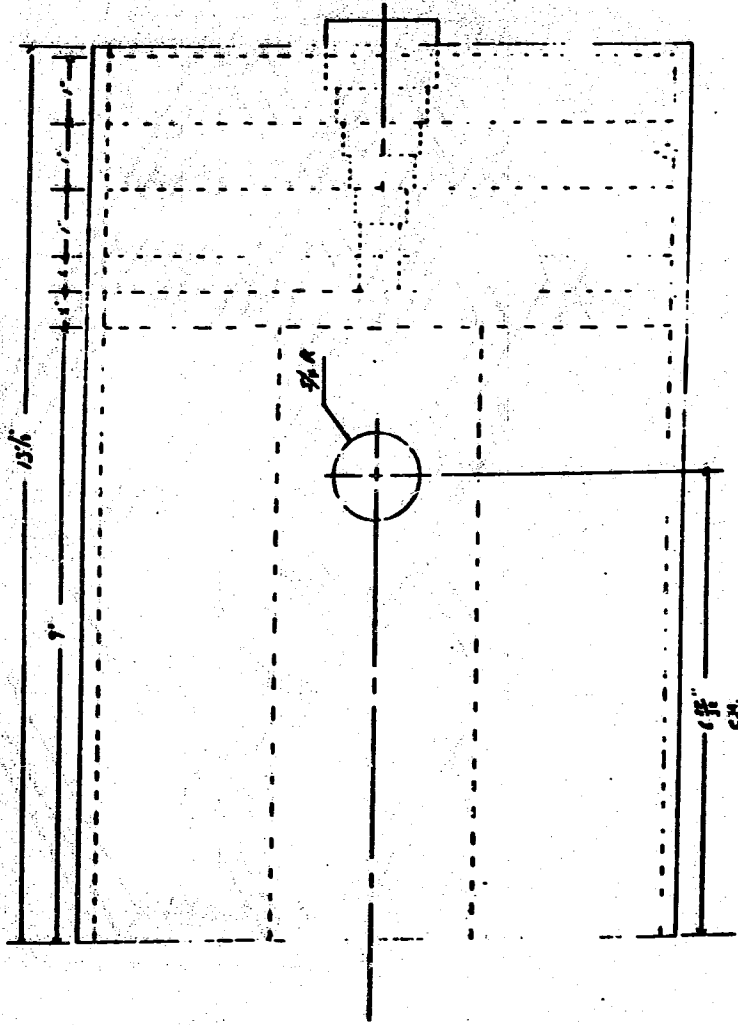




Table 1

GAMMA-RAY ENERGIES AND SOURCE INTENSITIES  
FOR DETECTOR CALIBRATION STANDARD

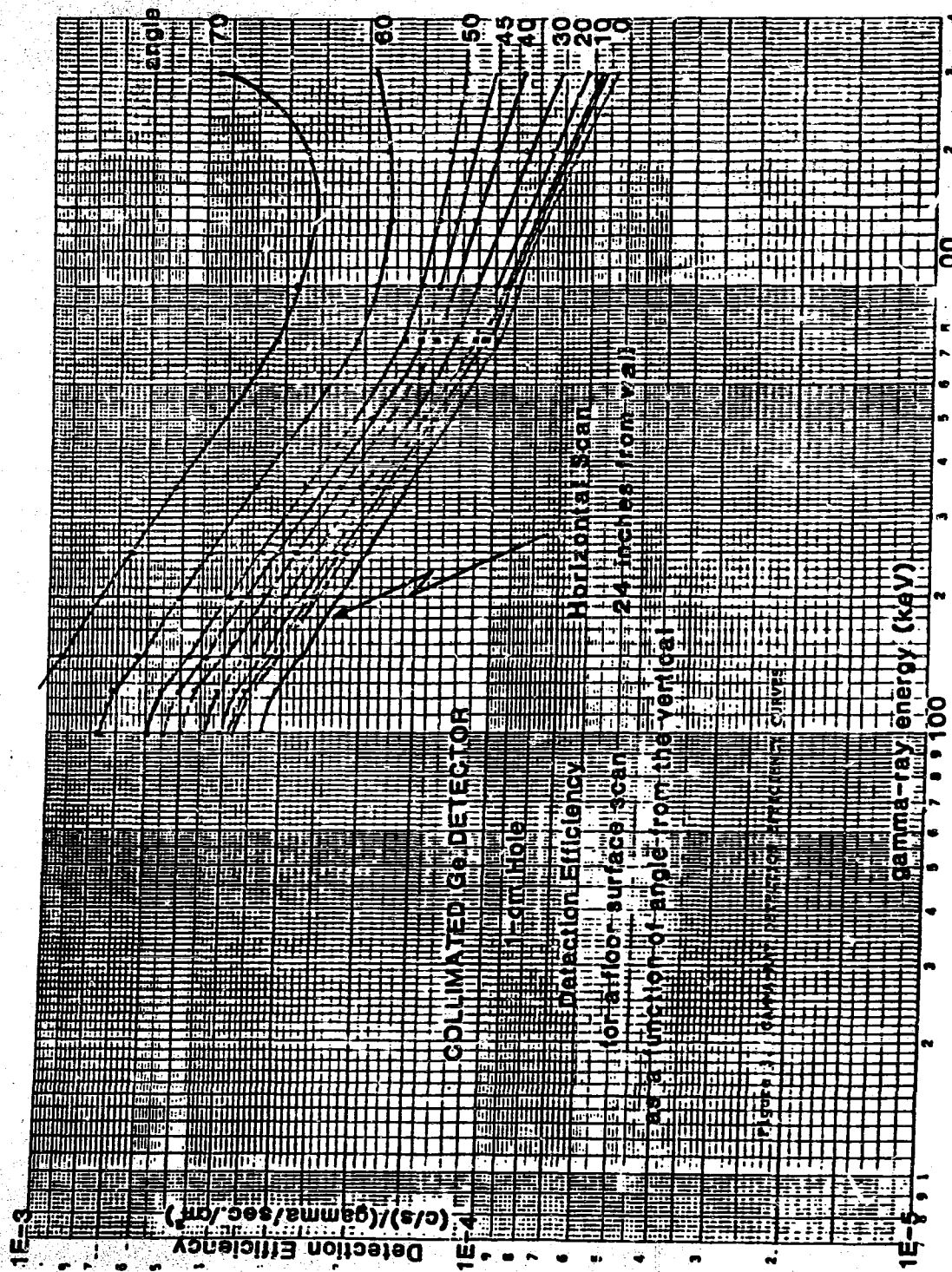
<u>Gamma-Ray Energy (keV)</u>	<u>Intensity Gamma-Rays per Second</u>
88	1345
122	1034
166	1001
279	2453
392	2919
514	5146
662	7817
898	8597
1173	9547
1332	9559
1836	9165

**Table 2**

**ON-AXIS AND OFF-AXIS DISTANCES AT WHICH  
CALIBRATION MEASUREMENTS WERE MADE**

<u>Distance Along Detector Symmetry Axis (cm)</u>	<u>Distance Off Detector Symmetry Axis (cm)</u>
12.76	0
"	0.1
"	0.2
"	0.3
"	0.4
"	0.6
"	0.7
"	0.8
"	1.0
17.26	0
22.76	0
30.96	0

Distances along the detector symmetry axis are measured from the cap of the detector cryostat. The distance of 12.76-cm is the distance to the outside of the collimator. Since the diameter of the hole in the collimator is 1-cm, it can be seen that measurements were made that extended to two diameters of the collimator hole. Data from the calibration measurements were fit to obtain the values for the parameters describing the detector response (as in the detector model of Reference 2). These values were then used to calculate detection efficiencies. Figure 3 shows the calculated detection efficiencies for the configuration as a function of collimator angle and of gamma-ray energy.



### Section 3

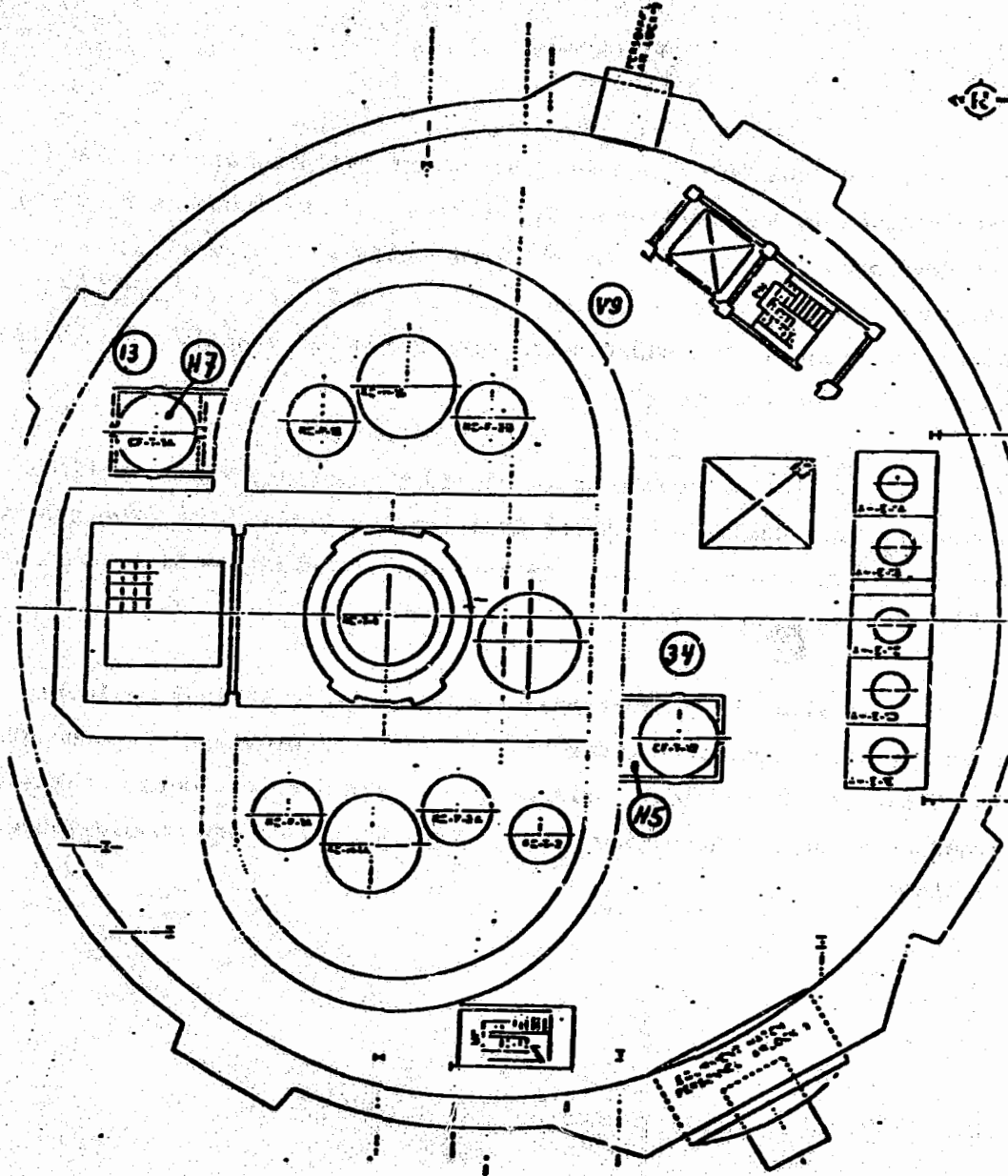
#### MEASUREMENTS AND RESULTS

Five areas of the TMI-2 reactor containment building elevation 305' were scanned in the measurements. These areas are shown in Figure 4 and described in Table 3. Two of these areas were of wall surfaces and three were of floor surfaces. Two of the floor areas were under core-flood tanks. The experiments were conducted exactly as discussed in Reference 10.

Table 4 shows the net counting rates and the surface contaminations resulting from analyses of these data for the five areas. The results are for  $^{137}\text{Cs}$  contamination. The analysis technique is also identical to that of Reference 10.

The results from the present measurements show contamination levels substantially lower than those seen<sup>10,11</sup> in our previous measurements. The areas are of vertical surfaces which were not previously scanned, floor areas under tanks, and a floor area that had seen considerable traffic.

FLOOR PLAN OF TMI-2 REACTOR BUILDING 305' ELEVATION  
SHOWING MEASUREMENT LOCATIONS



PLAN EL. 305'-0"

Figure 4

Table 3

LISTING OF AREAS OF TMI-2 CONTAINMENT, ELEVATION 305' FOR WHICH MEASUREMENTS WERE MADE BY GAMMA-RAY SCANNING OF THE SURFACE CONTAMINATION IN THE ENTRY OF DECEMBER 16, 1981

<u>Area Designation</u>	<u>Description of Area</u>
13	Area of containment wall, approximately two feet above the floor. Northeast corner near "A" core-flood-tank.
H7	Floor area under core-flood-tank "A".
V9	Surface of "D-ring" wall near #2 stairwell.
34	Area of floor near "B" core-flood-tank and six feet out from edge of "D-ring".
H7	Floor area under core-flood-tank "B".

Table 4

NET <sup>137</sup>Cs COUNTING RATES AND SURFACE CONTAMINATION LEVELS  
FOR THE FIVE SCANS OF THE ENTRY OF DECEMBER 16, 1981

<u>Area Designation</u>	<u>Net <sup>137</sup>Cs Counting Rate (c/s)</u>	<u><sup>137</sup>Cs Surface Contamination (<math>\mu</math>Ci/cm<sup>2</sup>)</u>
13	<0.6	<0.2
H7	4.5 $\pm$ 0.5	0.96 $\pm$ 0.10
V9	1.7 $\pm$ 0.9	0.5 $\pm$ 0.3
34	4.1 $\pm$ 0.8	0.9 $\pm$ 0.2
H5	<1.5	<0.3



## REFERENCE

1. A Technique of Gamma-Ray Detector Absolute Efficiency Calibration For Extended Sources, Computers in Activation Analysis and Gamma-Ray Spectroscopy, DOE Symposium Series 49, CONF-780421, J. E. Cline, 1979.
2. Germanium Spectrometer Calibration Procedures, Volume 2, ISPO-80, SAI-139-79-501-RV, Program For Technical Assistance to IAEA Safeguards, J. E. Cline and P. G. Voillequé, November 1979.
3. Radiation Measurements in Steam Generator "B" at the Palisades Nuclear Station, C. D. Thomas, Jr., J. E. Cline and P. Roy, March 1980.
4. Gamma-Ray Measurements of the TMI-2 Containment Surfaces by Scans Through The Equipment Hatch, J. E. Cline, P. G. Voillequé and C. D. Thomas, Jr., June 1979.
5. Gamma-Ray Measurements in Containment Penetration R-605 at TMI-2, J. E. Cline, C. D. Thomas, Jr., P. G. Voillequé, E. Walker and T. Menzel, August 1979.
6. Gamma-Ray Measurements in Containment Penetration R-626 at TMI-2, J. E. Cline, C. D. Thomas, Jr. and E. Walker, September 1979.
7. Gamma-Ray Measurements Through the Inner Door of the Personnel Airlock at TMI-2, C. D. Thomas, Jr., J. E. Cline, T. Fritz and J. Tate, March 1980.
8. Gamma-Ray Measurements in the Reactor Building at the J. A. Fitzpatrick Power Plant, J. E. Cline, D. S. Cameron and D. A. Keefer, February 1981.
9. Measurements of Activities in the Reactor Coolant Bleed Tanks at TMI-2, J. E. Cline, C. D. Thomas, Jr., J. A. Daniel, E. A. Schlomer, D. Keefer and M. Pavelek, August 1981.
10. Measurement of Surface Contamination Levels on Designated Floor Areas on Elevation 305', TMI-2 Reactor Building, SAI-139-81-01-RV, J. E. Cline, C. D. Thomas, Jr., D. S. Cameron, John R. Cooper and James E. Tarpinian, September 1981.
11. Measurement of Contamination On Containment Coolers C, D, and E and Surface Contamination On A Designated Floor Area On Elevation 305', TMI-2 Reactor Building, SAI-139-81-06-RV, D. S. Cameron, E. D. Barefoot, C. D. Thomas, Jr., and J. E. Cline, November 1981.
12. Gamma-Ray Scans of Selected Control-Rod Blades and Fuel Flow Channels In Oyster Creek Fuel Pool, SAI-139-81-09-RV, J. E. Cline and D. S. Cameron, December 21, 1981.